

plus  
**AirriA**  
KUNDANG  
HOMES of MODERN NOSTALGIA

Life  
in Rewind





## MODERN LIVING WITH A BLAST FROM THE PAST



Welcome to Airria Plus, a 59-acre modern residential development in Kundang that takes you back to your fondest memories from all those years ago.

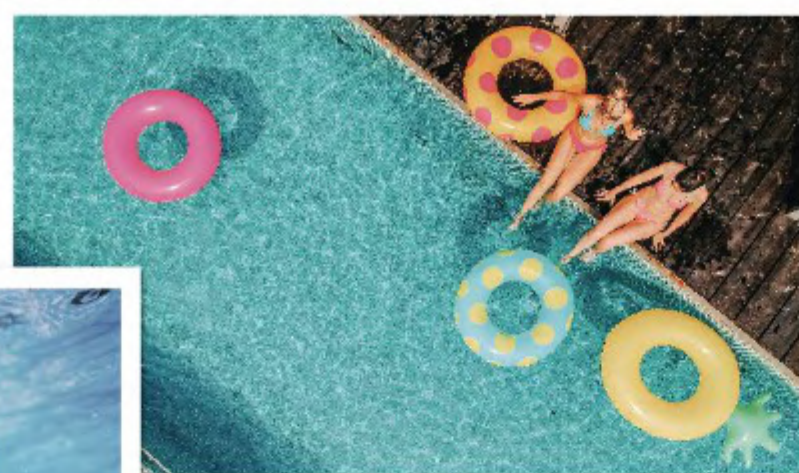
The breath of fresh air, the gentle lapping of the lake's water, the echo of the kids' laughter, an evening stroll with the parents - those little moments that feel like they could last forever.





## Rewind and Unwind

Enjoying the quiet times of yesterday feels even better when shared with a community. Our state-of-the-art clubhouse serves as the heart of this experience, a place where memories are both forged and recreated.



An infinity pool mirrors the lake's calm, while the gym and serene nooks invite both movement and rest, a place where families can linger, connect, and breathe. It's a retreat that fosters moments that feel like home. Moments that we cherish.





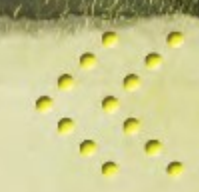


Rekindle Cherished Memories,



As You Create New Ones.

Camp by the lake with your loved ones as you fill the air with laughter and joy. Or sit by the calm waters as you get lost in reflection of your happiest memories. Timeless yet fleeting, familiar yet ever-new, it all comes to life much like nature - endlessly renewing, yet always rooted in what matters most.







## The Master Plan

### Clubhouse

1. Badminton Court
2. Kindergarten
3. Surau
4. Café
5. Management Office
6. Gymnasium

### 7.0 Acres Central Lake Park

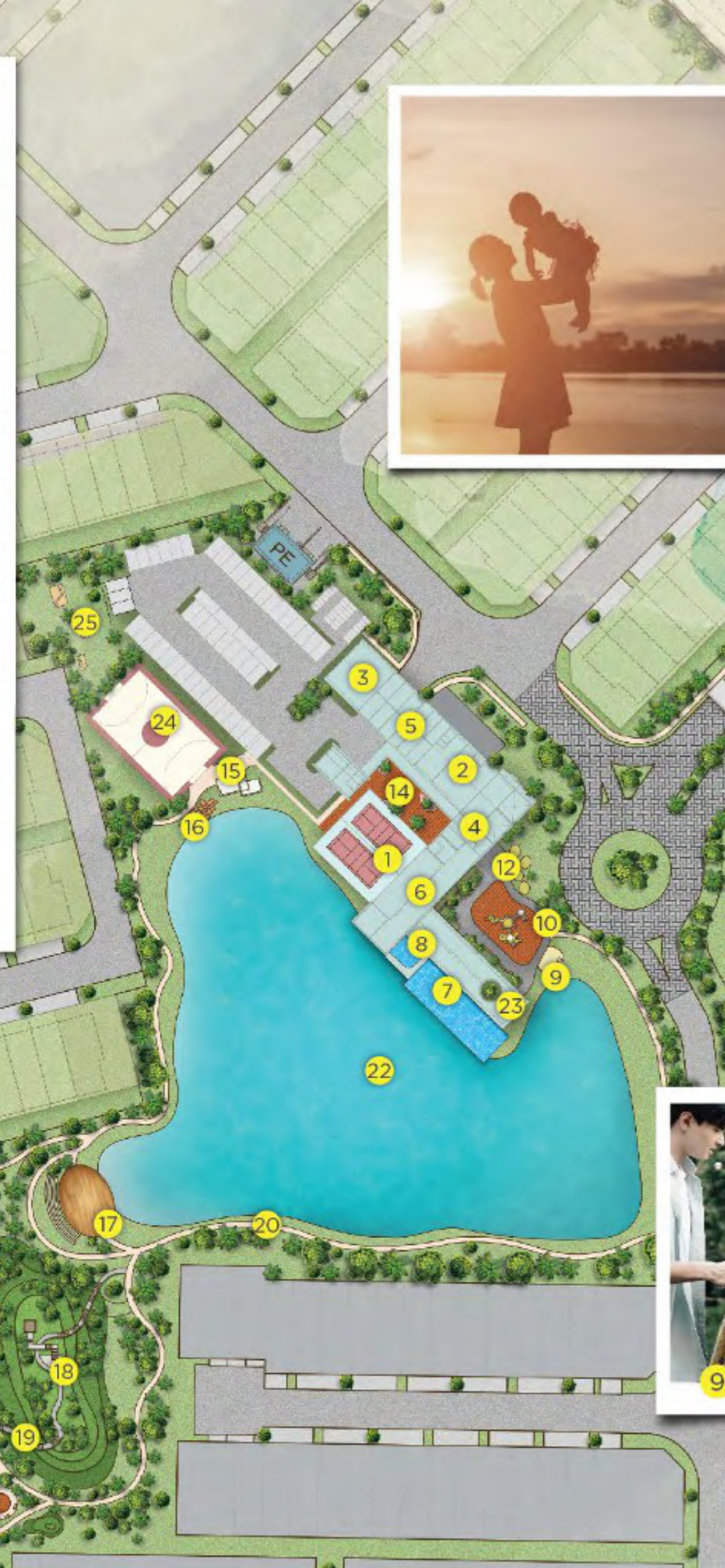
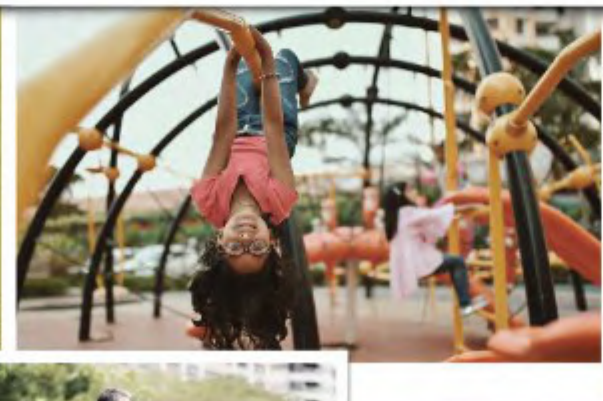
7. 25m Lap Pool
8. Wading Pool
9. BBQ Pit
10. Kids Playground 1
11. Kids Playground 2
12. Outdoor Gym 1
13. Outdoor Gym 2
14. Entrance Boulevard
15. Viewing Deck
16. Teratai Plaza
17. Amphitheatre
18. Tree House
19. Jungle Trail
20. 1km Jogging & Cycling Track
21. Community Spice Garden
22. Central Lake
23. Sunken Lounge
24. Recreational Multi-purpose Sport Court
25. Garden Park
26. Guard House



Tree House



Kid playground at the Clubhouse



Life  
in Rewind







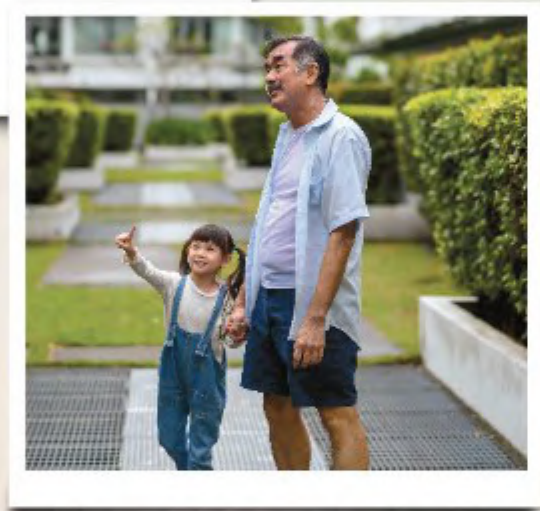
Artist impression only

TYPE A1

20' X 65'  
4 Bedrooms  
3 Bathrooms

## Where The Heart Finds Its Place.

Every corner tells a story of comfort and belonging, a space where memories are made with each passing day. With every sunrise, a new chapter begins, inviting you to create lasting moments in a place as unique as the life it holds.



This is a home where space to grow and room to gather come together. A home that evolves with the memories you build and share with those you hold dear. A home where comfort is ever-present, and every day feels as if it was meant to be.





## TYPE B1

20' X 68'  
4 Bedrooms  
3 Bathrooms



## TYPE C1

22' X 65'  
4 Bedrooms  
3 Bathrooms





## TYPE D1

22' X 68'  
4 Bedrooms  
3 Bathrooms



GROUND FLOOR



FIRST FLOOR

## SPECIFICATION

- (a) **Structure** : Reinforced concrete
- (b) **Wall** : Concrete wall / Masonry wall
- (c) **Roofing Covering** : Roof tiles / Metal roofing sheet
- (d) **Roofing Framing** : Metal roof frame / Reinforced concrete frame
- (e) **Ceiling** : Skim coat / Plaster ceiling
- (f) **Windows** : Aluminium framed glass windows
- (g) **Doors** : Timber door / Aluminium framed glass doors
- (h) **Ironmongery** : i) All doors - Selected locksets
- (i) **Wall finishes** : i) Kitchen - 1500mm high selected tiles, plaster and paint  
ii) Baths - Full height selected tiles  
iii) Other walls - Plaster and paint
- (j) **Floor Finishes** : Selected tiles / Cement render
- (k) **Sanitary and Plumbing Fittings** :

ITEM TYPE	QUANTITY		
	Corner A3, A4, B3, B4, C1, C2, D1, D2	Intermediate A1, A2, B1, B2	End B5, C3, C4, D3, D4
Water closet	3	3	3
Wash basins	3	3	3
Shower points	3	3	3
Tap points	5	5	5
Kitchen sink	1	1	1
(l) <b>Electrical Installation</b> :			
Lighting point	17	16	17
13A power point	11	11	11
Ceiling fan point	2	2	2
Fibre wall socket	1	1	1
Distribution board	1	1	1

- (m) **Fencing** : 1500mm high fence



## Location Map



## Nearby Amenities

### Education

SJK (C) Kundang  
SK Seri Kundang  
SJK (C) Kuang  
SMK Taman Desa  
SMK Taman Desa 2

### Shopping

AEON Rawang  
Mydin Rawang  
Tesco Rawang

### Hospitals

Sungai Buloh Hospital  
KPJ Rawang  
Specialist Hospital  
Selgate Rawang Hospital

### Highways

North-South Expressway  
Guthrie Corridor Expressway  
LATAR Expressway



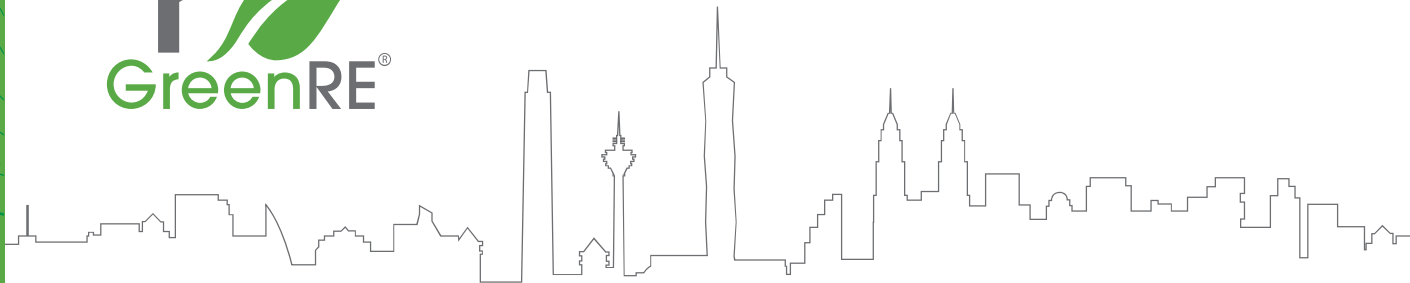
**Adenland (Kundang) Sdn Bhd** (970958-D)  
Oval Office Tower Damansara, Unit 3-11 & 12, Menara Permata  
Damansara, 685, Jln Damansara, 60000, Kuala Lumpur.  
T +603-7732 9612 F +603-7732 9614



**T: +603 7732 9612**  
**adenland.com.my**

The information contained in this brochure may be changed or deleted or altered at any time without prior notice and/ or subject to amendment as may be required by the developer, the authorities & the developer's consultants from time to time. This brochure shall not be construed or deemed to be representation by the developer in any way whatsoever. Purchasers are advised to refer to actual information, specifications or plans as inserted in the stamped Sale & Purchase Agreement entered into between the developer & the purchaser. All drawings are merely artist impressions only.





# Taman Airria Kundang

has been awarded

# BRONZE

Provisional GreenRE Certification  
Township Category

A project by

**Adenland (Kundang) Sdn. Bhd.**

on 18th August 2025

**Datuk Seri Dr Michael K C Yam**

*SMW, DSNS, FCI OB, FRICS, DUniv (Heriot-Watt)*

Director

GreenRE Sdn Bhd (1040485-V)

Wisma REHDA, No. 2C, Jalan SS5D/6, 47301 Petaling Jaya

T 603-7803 2978

F 603-7803 5285



Certificate No.: A3925AKSB-24/AA